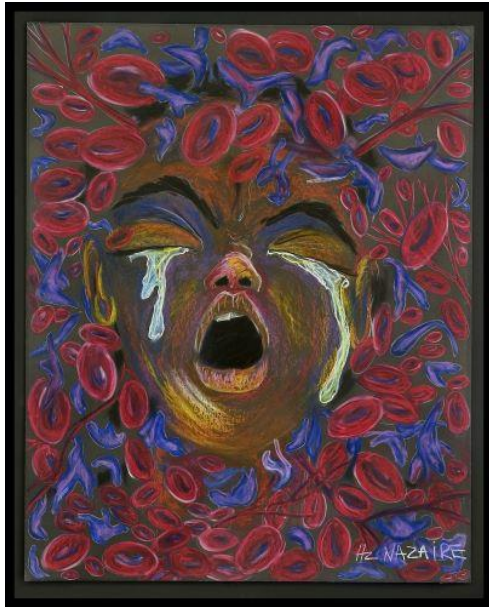


Pain in Sickle Cell Disease: Lessons from sickle cell mice

Cheryl Hillery

Children's Hospital of Pittsburgh
University of Pittsburgh



"Ten Redefined" by Hertz Nazaire

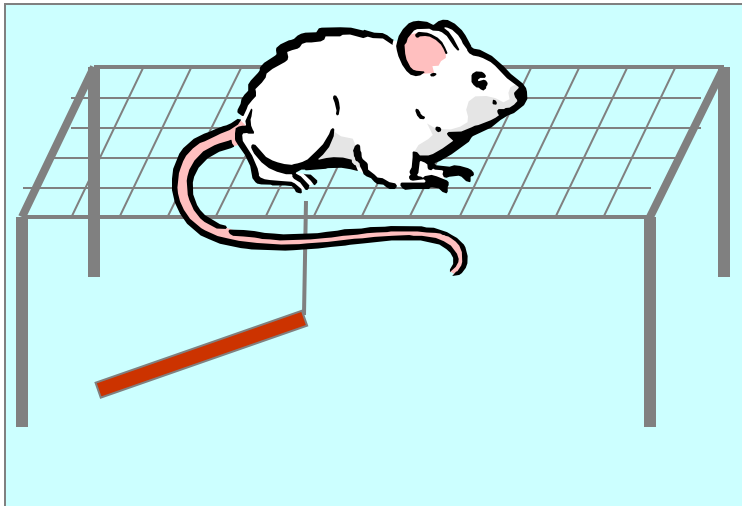
Pain is a hallmark of sickle cell disease

- Major cause of ill health
 - ER visits, hospitalizations & daily suffering
- Children: pain happens in various locations
 - Acute “crises” with pain free intervals
 - Can occur more often with older age
- Older adolescents & adults: any site (“all over”)
 - Development of chronic pain
 - Underreported: many days with pain at home
 - Many individuals with pain every day

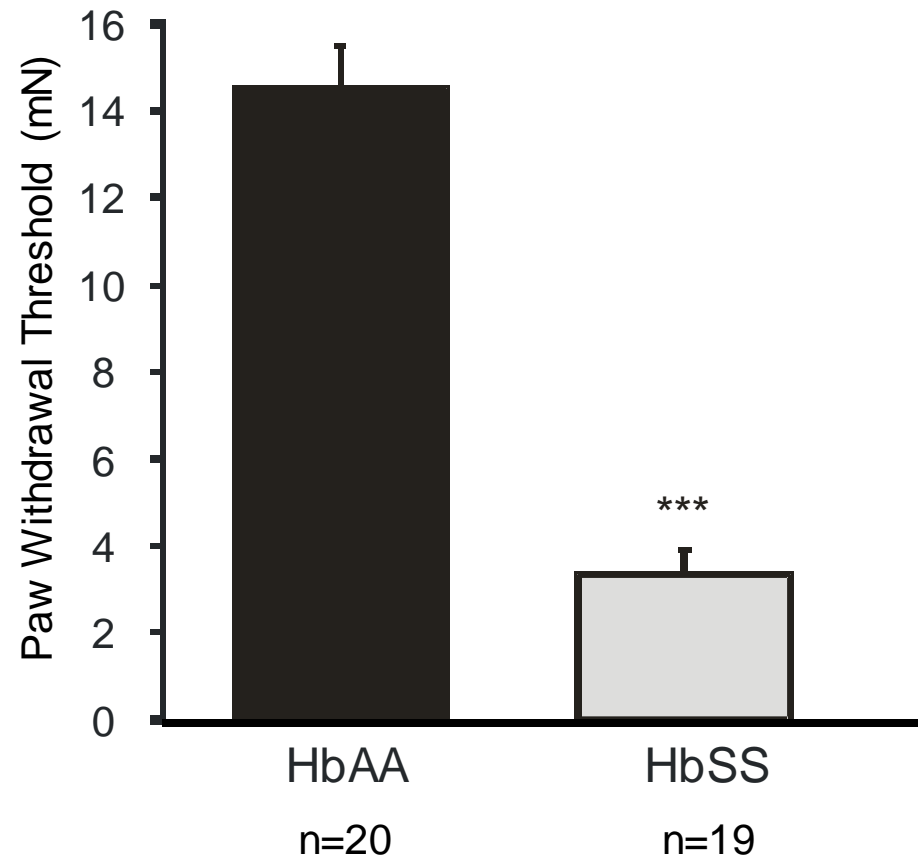
Pain in sickle cell disease is poorly understood

Sickle mice are very sensitive to light touch

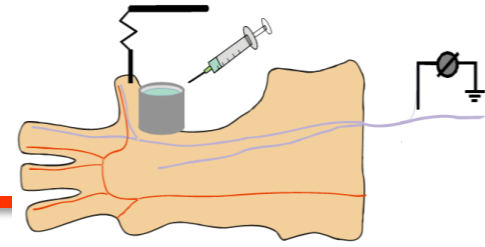
Von Frey Mechanical Threshold



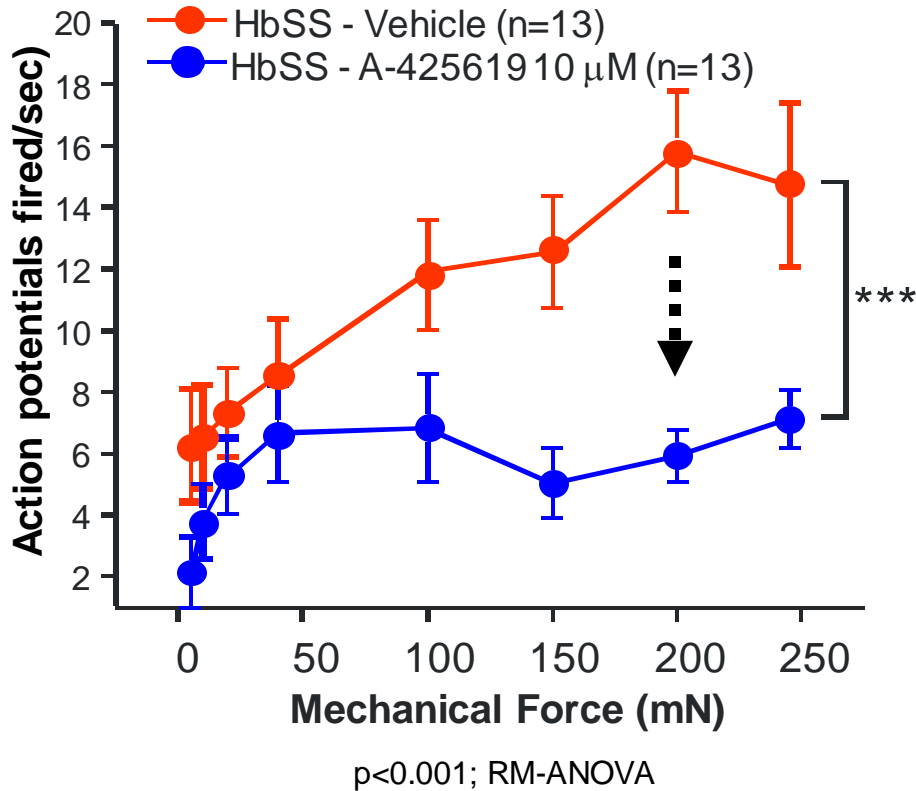
Mechanical Sensitivity



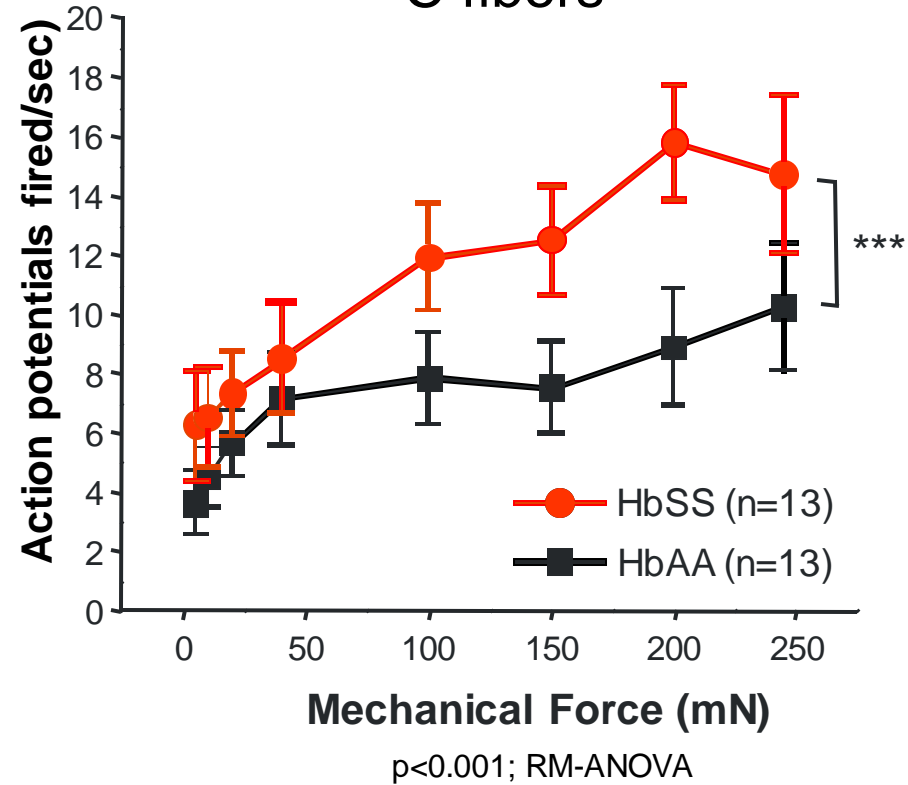
Sickle mouse nerves are over active



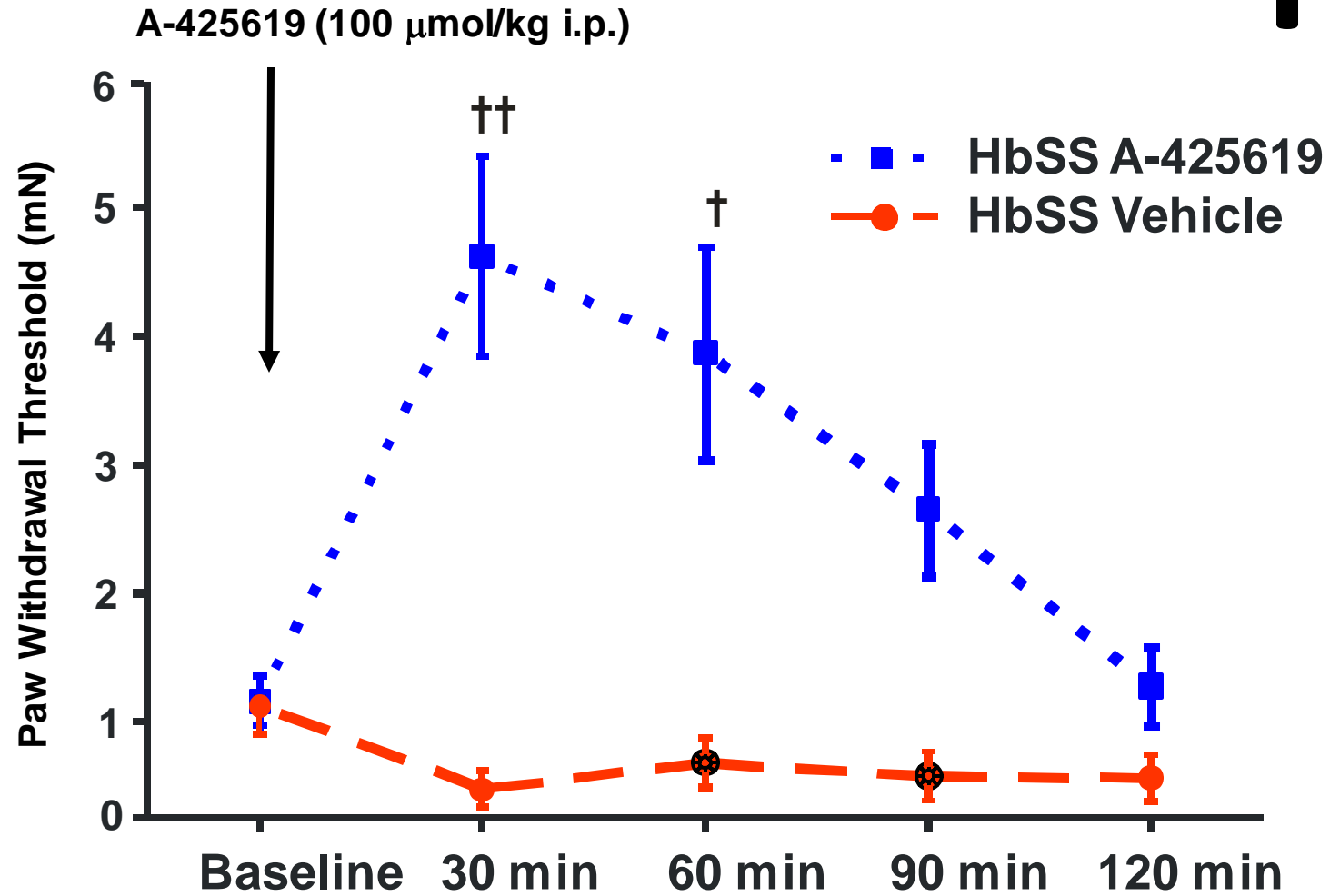
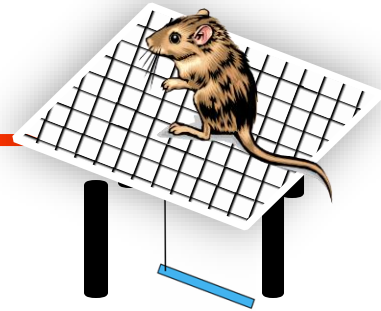
Pain receptor blocker: A-425619



C fibers



Sickle mice: pain receptor blocker





“Hope” by Hertz Nazaire